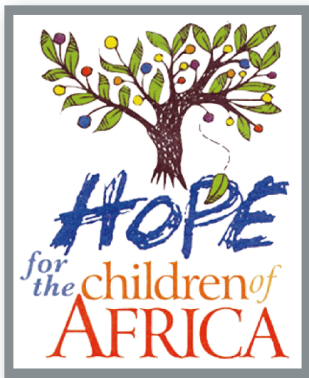


Jamaa Letu means "Our Family" in Swahili



Under the leadership of our bishops, the people of the Pacific Northwest Conference of the United Methodist Church have committed to the care of the children and youth at the Jamaa Letu Orphanages

**For more information
please visit**

JamaaLetu.org

*(Photos of the orphans
can be found here.)*



or on Facebook @

*[https://www.facebook.com/
HopeForTheChildrenofAfrica/](https://www.facebook.com/HopeForTheChildrenofAfrica/)*



or Contact:

T: (206) 870-6820 or (800) 755-7710

E: JamaaLetu@gmail.com

Donation Options

Donate Through Your Local UMC

Local UMC Instructions:

Mark donation to Jamaa Letu Orphanages & note if it's for a Child & Youth Sponsorship, College Scholarship, or general Jamaa Letu support. Talk with your coordinator. *

*Local UMC Treasurer:

Transmit the funds to the PNW Conference.
Note the intent of the donor on the remittance form.

Or Send Donations to



Jamaa Letu Orphanages
Pacific NW Conference Office
P.O. Box 13650
Des Moines, WA 98193-1009

Mail donation or direct your bank to send the funds & note if it's for a Child & Youth Sponsorship, College Scholarship, or general Jamaa Letu support.

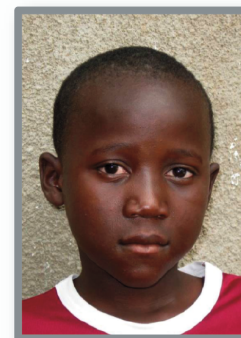


Open Hearts. Open Minds. Open Doors.
The people of The United Methodist Church®

Created October 2017



Sponsorships & College Scholarships



Child & Youth Sponsorship

Our sponsorship program supports the operating expenses of the orphanages. Expenses include food, clothing, school fees, medical care, utilities, and the salaries of the housemothers. The Jamaa Letu girls orphanage can be a home for up to 60, and Jamaa Letu boys orphanage can be a home for up to 30. Children range in age from infants to their completion of high school. Each child has support from more than one sponsor, and the funds are pooled to benefit all of the children.



College Scholarship

Our commitment to the children does not end when they complete secondary school. We provide the opportunity for you to continue supporting a child you've watched grow up or a new opportunity to aid in the scholarship of a young adult. They have no other way to pay for ongoing education or vocational training as they move towards independence. Please consider making a five year commitment to help them achieve their goals.



How I Can Help the Orphans

EVERY donation is appreciated and accepted, large or small!

Suggested Annual Child & Youth Sponsorship...\$493

(Our total annual support per child is \$1500.)

Suggested Annual College Scholarship...\$500

(Our total annual support per student is \$4000.)

- Sponsors receive a photo and information about the child, youth, or young adult.
- Sponsors may be individuals, small groups, or a whole church!
- Your pledge may be paid one time or in installments.

Please see back page for more information and where to make donations.